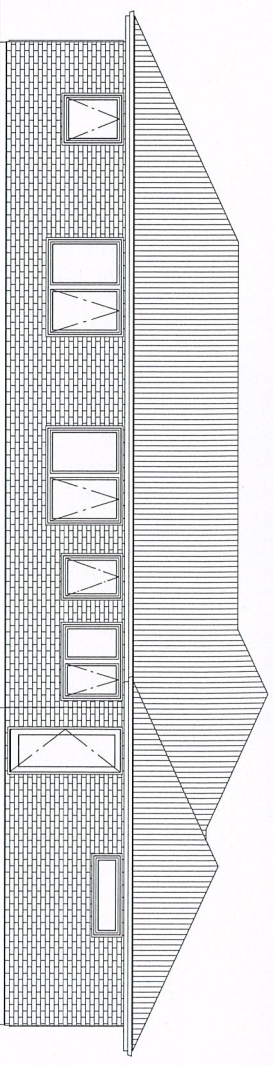


**PH: MARY 021 0876 3030**  
**mary.brown@silverstarhomes.nz**



This architectural drawing shows a side elevation of a building. The facade is composed of a brick pattern. At the top left is a large, empty rectangular window. Below it are four smaller windows, each with a triangular pediment. The roof is a steep gable, indicated by horizontal hatching. The drawing is oriented vertically on the page.

This architectural drawing shows a side elevation of a building. The facade is covered in a brick pattern. From top to bottom, the features are: a small square window, a large rectangular window with a decorative mullion pattern, a medium rectangular window, a medium rectangular window with a decorative mullion pattern, a medium rectangular window, a medium rectangular window with a decorative mullion pattern, and a large rectangular window with a decorative mullion pattern. The roof is a steep gable with a hatched pattern. The drawing is oriented vertically on the page.

This architectural drawing shows a side elevation of a building. The facade is composed of a brick pattern. It features four window units: two small square windows at the top, two large rectangular windows in the middle, and two small square windows at the bottom. Each window unit is flanked by triangular decorative elements. To the right of the facade is a profile of a roof with multiple gables, indicated by diagonal hatching lines.

[illegible]The logo for Buitin New Zealand. It features the word "buitin" in a bold, lowercase, sans-serif font, with the "i" and "n" in a darker shade of blue. Below the word "buitin" is a stylized orange arrow pointing upwards and to the right. To the right of the arrow, the words "NEW ZEALAND" are written in a smaller, uppercase, sans-serif font.